

**POLY-CRYSTALLINE SOLAR MODULE 36 CELLS - 156x156 mm**



High reliability with guaranteed 0 to +5W power output tolerance



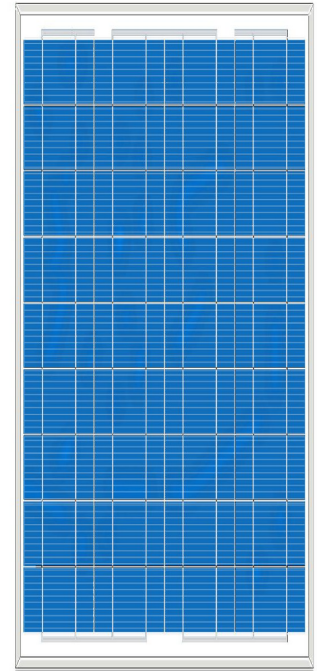
Excellent performance under different light conditions



25 Year Linear Power Warranty on the production to cover the investment



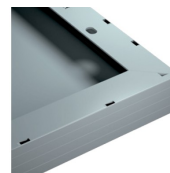
Passing mechanical load test of 5400 Pa to withstand heavier snow load and 2400 Pa to withstand wind pressure



**RELIABLE PERFORMANCES**

- World class manufacturer of crystalline silicon photovoltaic modules
- Production capacity of over 300MW/year
- Production facility and products certified under the most restrictive international standards
- Very high quality production process with continuous improving investments

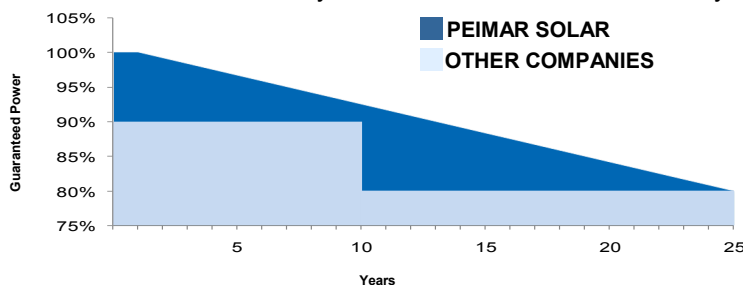
**COMPACT AND DURABLE FRAME**



Ultra-light aluminum frame with 40mm thickness to handle the panel in a easier way

**LINEAR PERFORMANCE WARRANTY**

10 Year Product Warranty • 25 Year Linear Power Warranty



**IP65 JUNCTION BOX**



Able to withstand the most varied atmospheric conditions

ELECTRICAL CHARACTERISTICS	OS130P	OS140P	OS150P
Nominal Output (Pmax) [W]	130	140	150
Flash Test Power Classification [W]	0 / +5	0 / +5	0 / +5
Voltage at Pmax (Vmp) [V]	17.64	17.64	17.64
Current at Pmax (Imp) [A]	7.37	7.94	8.50
Open Circuit Voltage (Voc) [V]	21.17	21.17	21.17
Short Circuit Current (Isc) [A]	8.25	8.89	9.51
Maximum System Voltage [V]	IEC: 1000 / UL: 600		
Maximum Series Fuse Rating [A]	15		
Cell Efficiency [%]	14.84	15.98	17.12
Module Efficiency [%]	13.01	14.02	15.02

STC\* (Standard Test Condition): Irradiance 1000W/m<sup>2</sup>, Module Temperature 25°C, Air Mass 1.5

### TEMPERATURE CHARACTERISTICS

NOCT**	45±2 °C
Temperature Coefficient of Pmax	-0.43 %/°C
Temperature Coefficient of Voc	-0.32 %/°C
Temperature Coefficient of Isc	0.047 %/°C
Operating Temperature	-40 °C ~ +85 °C

NOCT\*\*: Nominal Operation Cell Temperature Sun 800W/m<sup>2</sup>; Air 20°C; Wind speed 1m/s

### MECHANICAL CHARACTERISTICS

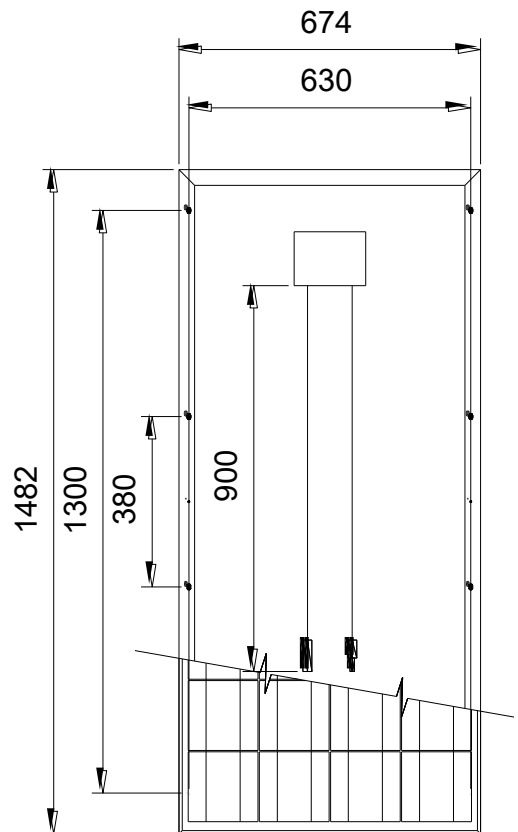
Solar Cells	36(4x9) poly-crystalline cells 156x156 mm
Front Cover	3.2 mm thick, low iron tempered glass
Back Cover	TPT (Tedlar-PET-Tedlar)
Encapsulant	EVA (Ethylene vinyl acetate)
Frame	Anodized aluminium alloy, double wall
Diodes	3 Bypass diodes serviceable
Junction Box	IP65 rated
Connector	MC4 or compatible connector
Cables	Length: 900 mm / Section: 4.0 mm <sup>2</sup>
Dimensions	1482 x 674 x 35 mm
Weight	9.9 kg
Max. Load	Certified to 5400 Pa

### PACKING CONFIGURATION

Packaging dimensions	1500 x 685 x 45 mm
Pieces per package	50 pcs
Weight	555 kg

\* Pallets can not be stacked

### DIMENSIONS



### CURRENT/VOLTAGE CHARACTERISTICS

